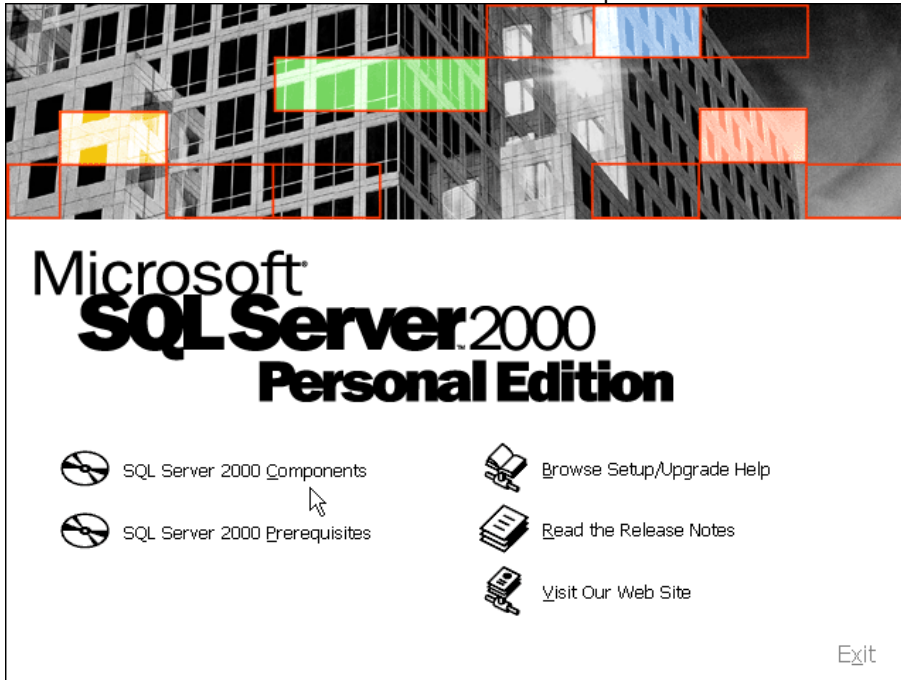


SQL Server 2000 Desktop Installation

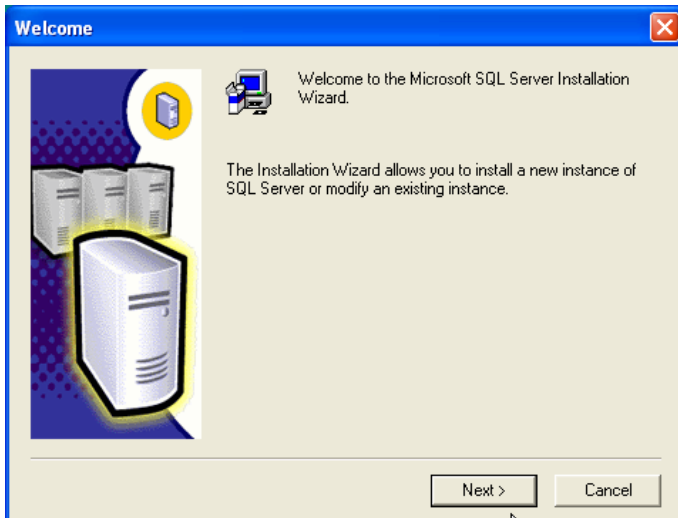
Double Click on the AUTORUN.EXE from the SQL Desktop Installation folder and follow the screen shots as shown below.



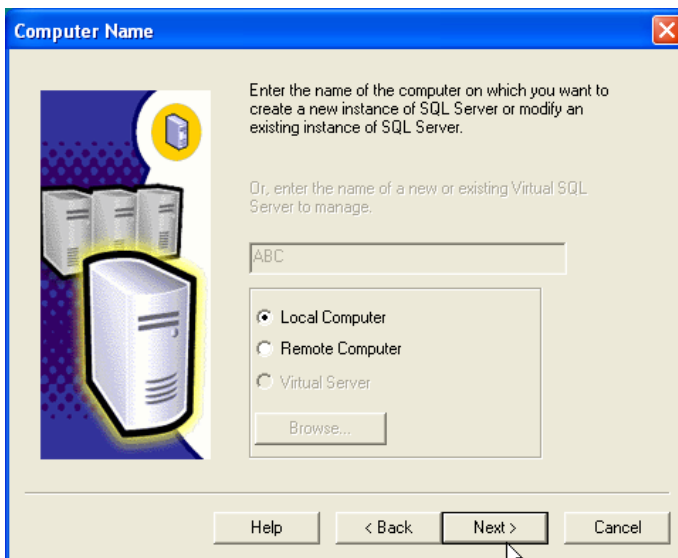
Click on SQL Server 2000 components



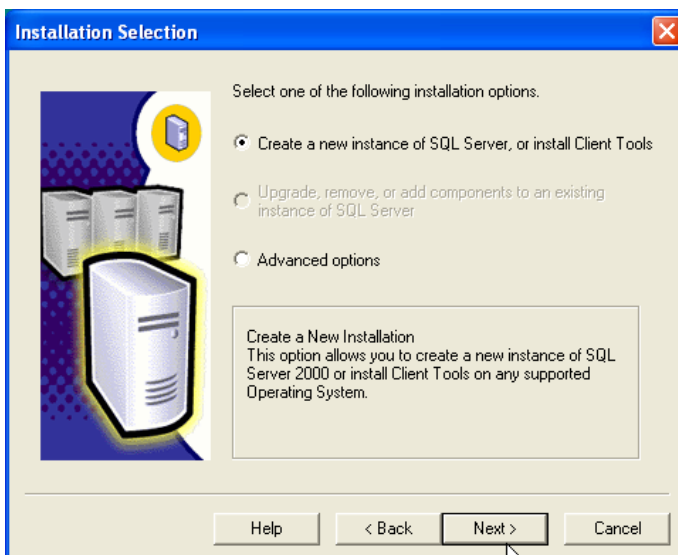
Click on "Install Database Server"



Click on **Next >**



☒ **Local Computer** Should be selected, click on **Next >**



☒ **Create a new instance of SQL Server** Should be selected, click on **Next >**

User Information

Enter your name below. It is not necessary to enter a company name.

Name:

Company:

< Back **Next >** Cancel

The user and company names are not important leave them as they are, click

Next >

Software License Agreement

Please read the following License Agreement. Press the PAGE DOWN key to see the rest of the agreement.

ADDENDUM TO THE MICROSOFT END USER LICENSE AGREEMENT FOR MICROSOFT SQL SERVER 2000

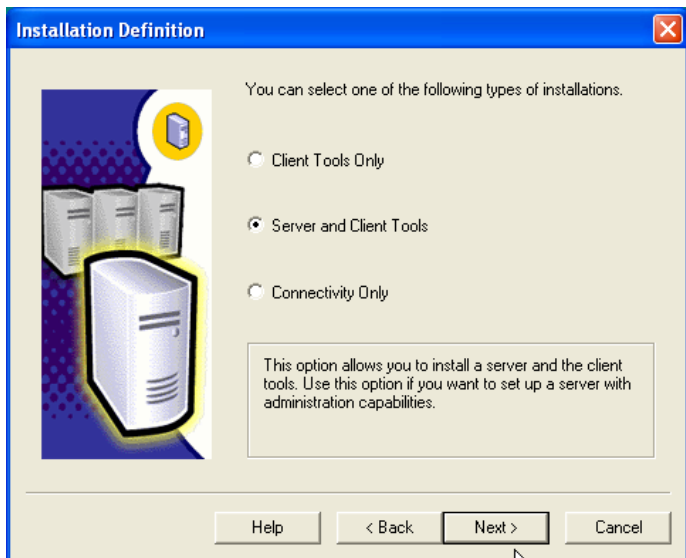
The software accompanying this Addendum, Microsoft SQL Server Personal Edition (the "Client Software") is provided to you for use under the terms and conditions of the end user license agreement you acquired with Microsoft SQL Server (Standard or Enterprise Edition) (the "EULA"). Please refer to the EULA for license rights and requirements associated with Client Software. The Client Software is deemed part of the Product (as defined in the EULA), and as such, if you do not have a validly licensed copy of the Product, you are not authorized to use the Client Software. Any capitalized terms used in this Addendum shall have the same meaning as set forth in the EULA, unless otherwise set forth in this Addendum. All terms and conditions of the EULA remain in full force and effect.

Do you accept all the terms of the preceding License Agreement? If you choose No, Setup will close. To install Microsoft SQL Server 2000, you must accept this agreement.

< Back **Yes** No

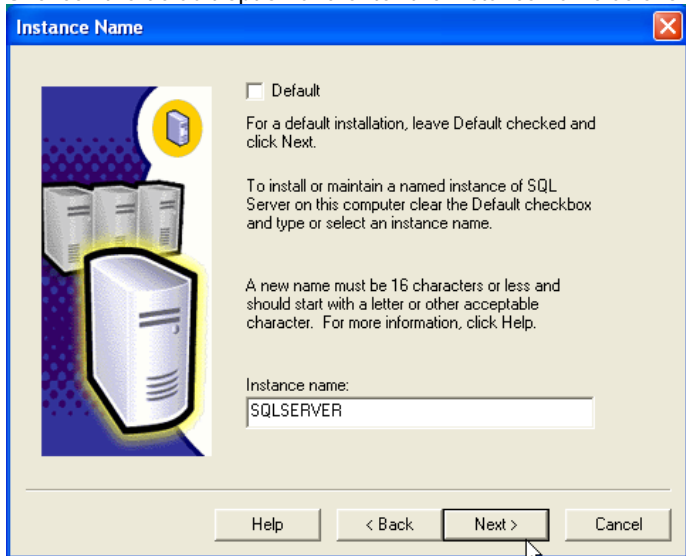
Click on

Next >



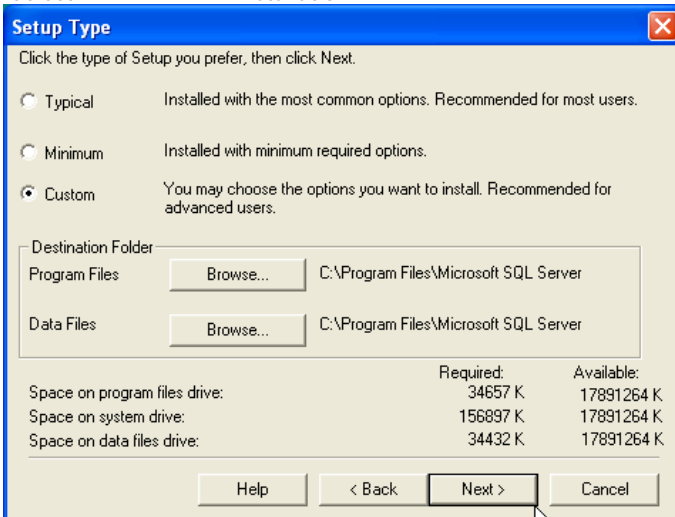
Ensure that ☒ **Server and Client tools** is selected.

Uncheck the default option and enter the instance name as shown below



Click on **Next >**

Select **Custom** installation

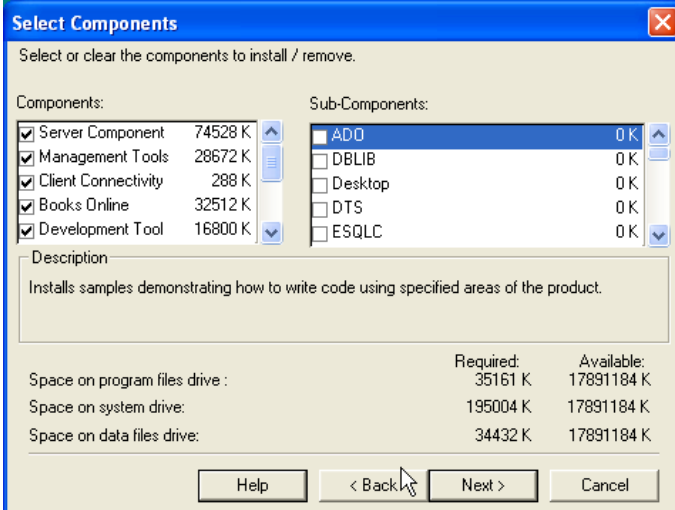


The Setup Type dialog box has a title bar with a close button. It contains three radio buttons: 'Typical' (with description 'Installed with the most common options. Recommended for most users.'), 'Minimum' (with description 'Installed with minimum required options.'), and 'Custom' (selected, with description 'You may choose the options you want to install. Recommended for advanced users.'). Below these is a 'Destination Folder' section with two rows: 'Program Files' and 'Data Files', each with a 'Browse...' button and the path 'C:\Program Files\Microsoft SQL Server'. At the bottom, there is a table showing space requirements and availability, and four buttons: 'Help', '< Back', 'Next >', and 'Cancel'.

	Required:	Available:
Space on program files drive:	34657 K	17891264 K
Space on system drive:	156897 K	17891264 K
Space on data files drive:	34432 K	17891264 K

Click **Next >**

For every component on the left hand side check all the sub components on right hand side.

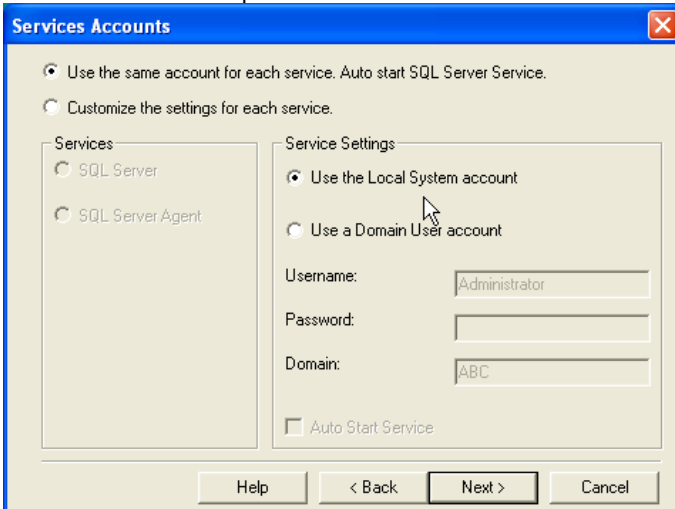


The Select Components dialog box has a title bar with a close button. It contains a section 'Select or clear the components to install / remove.' with two lists: 'Components:' and 'Sub-Components:'. The 'Components:' list has five items, all checked: 'Server Component' (74528 K), 'Management Tools' (28672 K), 'Client Connectivity' (288 K), 'Books Online' (32512 K), and 'Development Tool' (16800 K). The 'Sub-Components:' list has five items, all unchecked: 'ADO' (0 K), 'DBLIB' (0 K), 'Desktop' (0 K), 'DTS' (0 K), and 'ESQLC' (0 K). Below these lists is a 'Description' box with the text 'Installs samples demonstrating how to write code using specified areas of the product.' At the bottom, there is a table showing space requirements and availability, and four buttons: 'Help', '< Back', 'Next >', and 'Cancel'.

	Required:	Available:
Space on program files drive :	35161 K	17891184 K
Space on system drive:	195004 K	17891184 K
Space on data files drive:	34432 K	17891184 K

Click **Next >**

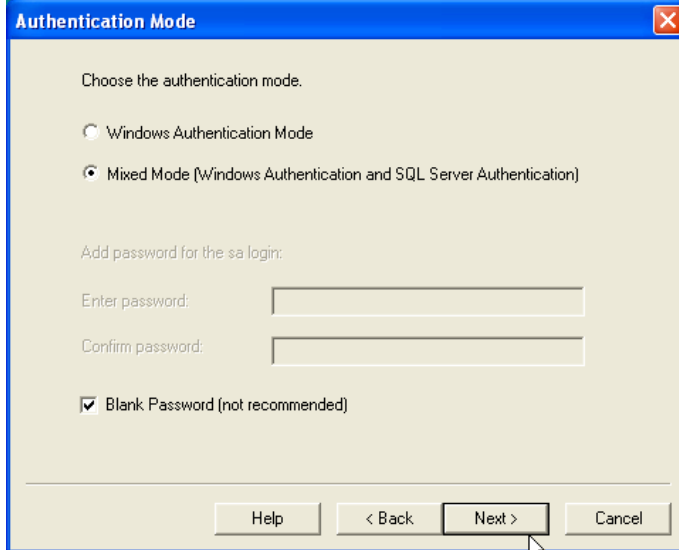
Be sure to select the options shown below.



The Services Accounts dialog box has a title bar with a close button. It contains two radio buttons: 'Use the same account for each service. Auto start SQL Server Service.' (selected) and 'Customize the settings for each service.'. Below these is a 'Services' list with two items: 'SQL Server' and 'SQL Server Agent'. To the right is a 'Service Settings' section with two radio buttons: 'Use the Local System account' (selected) and 'Use a Domain User account'. Below these are three text boxes: 'Username:' (containing 'Administrator'), 'Password:', and 'Domain:' (containing 'ABC'). At the bottom, there is a checkbox 'Auto Start Service' and four buttons: 'Help', '< Back', 'Next >', and 'Cancel'.

Click **Next >**

Select the Mixed Mode Authentication and check blank password.

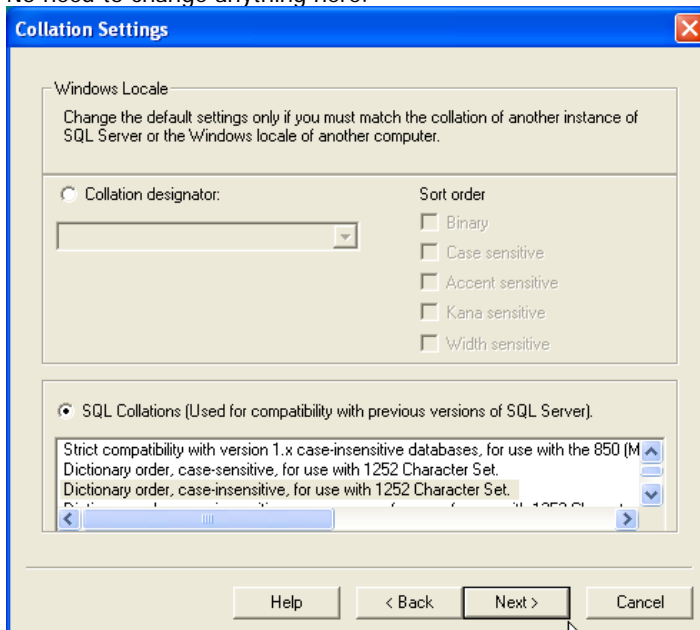


The 'Authentication Mode' dialog box has a blue title bar with a close button. The main area is light beige. It contains the text 'Choose the authentication mode.' followed by two radio buttons: 'Windows Authentication Mode' and 'Mixed Mode (Windows Authentication and SQL Server Authentication)'. The 'Mixed Mode' option is selected. Below this is the text 'Add password for the sa login:' followed by two text boxes labeled 'Enter password:' and 'Confirm password:'. A checkbox labeled 'Blank Password (not recommended)' is checked. At the bottom are four buttons: 'Help', '< Back', 'Next >', and 'Cancel'. A mouse cursor is pointing at the 'Next >' button.

Click

Next >

No need to change anything here.

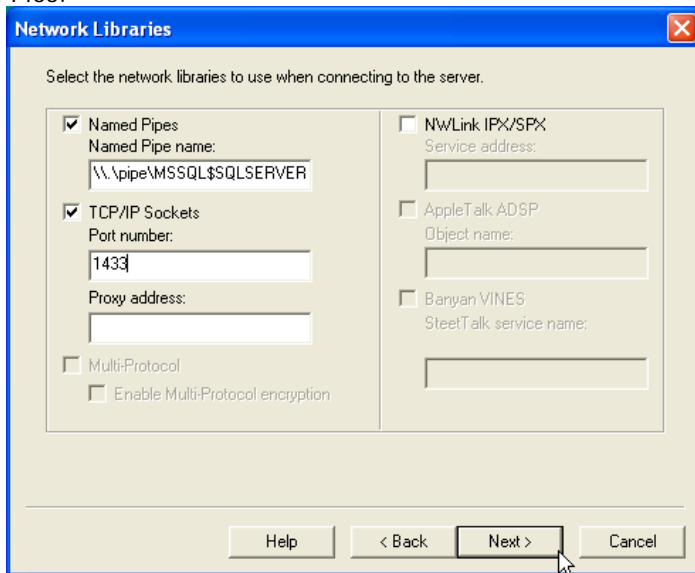


The 'Collation Settings' dialog box has a blue title bar with a close button. The main area is light beige. It contains the text 'Windows Locale' and a paragraph: 'Change the default settings only if you must match the collation of another instance of SQL Server or the Windows locale of another computer.' Below this is a section with two columns. The left column has a radio button labeled 'Collation designator:' followed by a dropdown menu. The right column has the text 'Sort order' followed by five checkboxes: 'Binary', 'Case sensitive', 'Accent sensitive', 'Kana sensitive', and 'Width sensitive'. Below this is a section with a radio button labeled 'SQL Collations (Used for compatibility with previous versions of SQL Server)'. Below this is a list box containing three items: 'Strict compatibility with version 1.x case-insensitive databases, for use with the 850 (M', 'Dictionary order, case-sensitive, for use with 1252 Character Set.', and 'Dictionary order, case-insensitive, for use with 1252 Character Set.'. At the bottom are four buttons: 'Help', '< Back', 'Next >', and 'Cancel'. A mouse cursor is pointing at the 'Next >' button.

Click

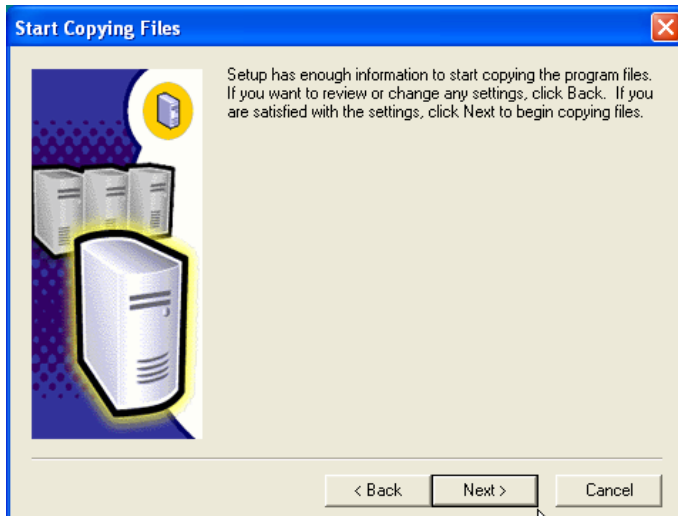
Next >

Ensure that both the options are checked i.e. ☒ Named Pipes and ☒ TCP/IP Sockets . Also ensure that port number is entered as 1433.



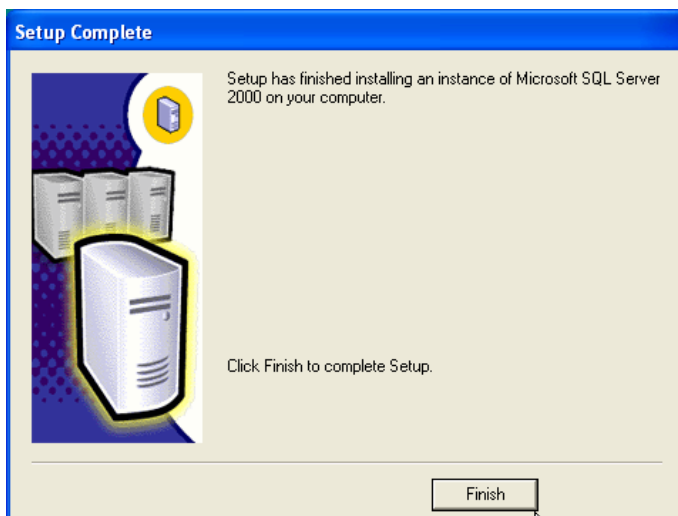
The 'Network Libraries' dialog box is shown with a blue title bar and a close button. It contains a section titled 'Select the network libraries to use when connecting to the server.' Below this, there are two columns of options. The left column has 'Named Pipes' and 'TCP/IP Sockets' checked, with 'Named Pipe name' set to '\\.\pipe\MSSQL\$SQLSERVER' and 'Port number' set to '1433'. The right column has 'NWLink IPX/SPX', 'AppleTalk ADSP', and 'Banyan VINES' unchecked. At the bottom, there are buttons for 'Help', '< Back', 'Next >', and 'Cancel'. A mouse cursor is pointing at the 'Next >' button.

Click **Next >**



The 'Start Copying Files' dialog box is shown with a blue title bar and a close button. It features an illustration of a server on the left. The text on the right says: 'Setup has enough information to start copying the program files. If you want to review or change any settings, click Back. If you are satisfied with the settings, click Next to begin copying files.' At the bottom, there are buttons for '< Back', 'Next >', and 'Cancel'. A mouse cursor is pointing at the 'Next >' button.

Click **Next >**



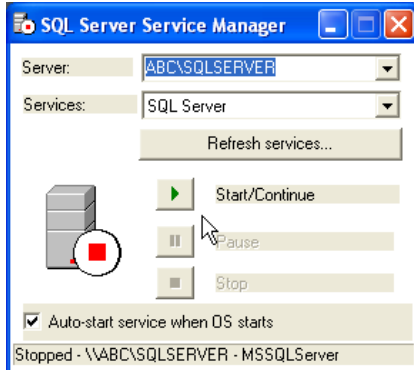
The 'Setup Complete' dialog box is shown with a blue title bar. It features the same server illustration as the previous dialog. The text on the right says: 'Setup has finished installing an instance of Microsoft SQL Server 2000 on your computer. Click Finish to complete Setup.' At the bottom, there is a 'Finish' button. A mouse cursor is pointing at the 'Finish' button.

Click **Finish** . You are done with installation of SQL 2000 Server desktop edition.

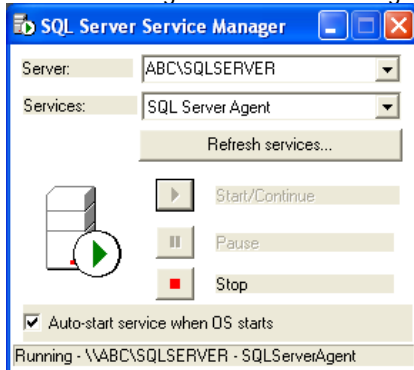
To start the SQL Services follow the next sequence of steps.

Click on Start → Program → MS SQL Server → Server Manager. This will bring up the SQL Server Service Manager Window.

Click on **Start / Continue** button as well as check the option ☒ **Auto-start service when OS starts**



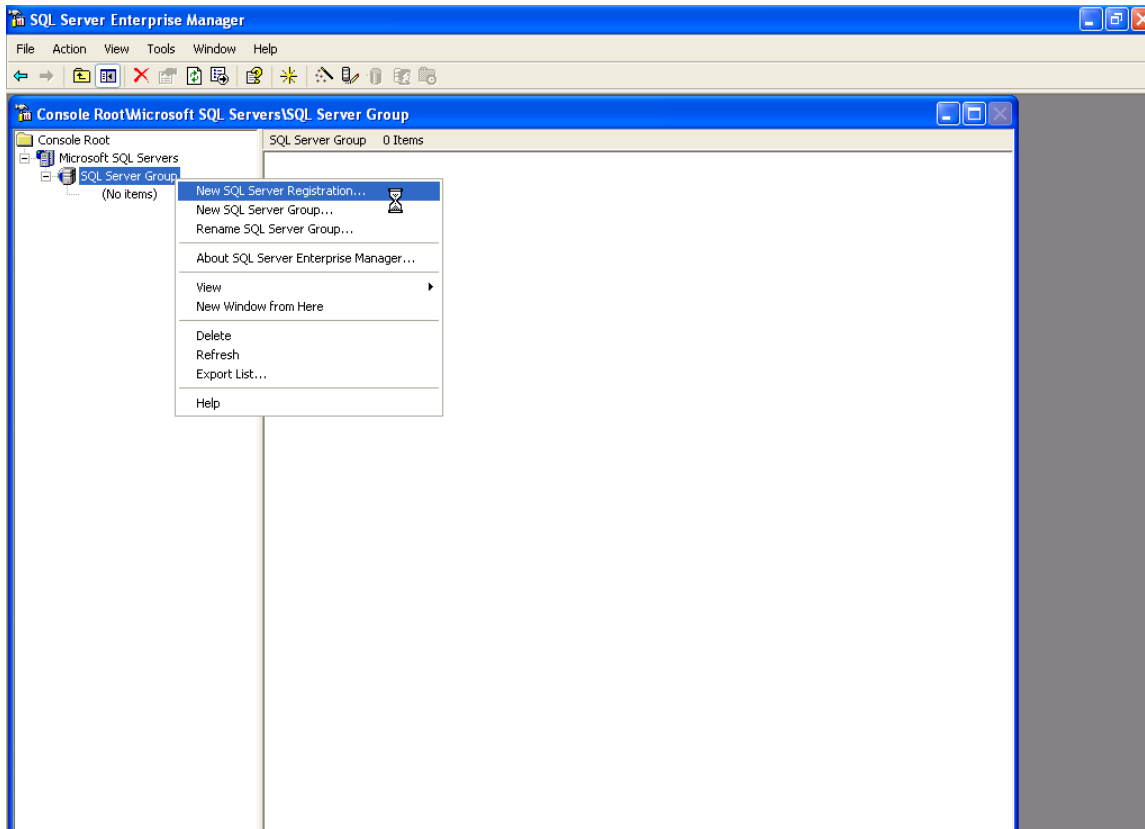
Click on the downward pointing arrow on services and select **SQL Server Agent** option. After selecting this again click **Start / Continue** and check the option ☒ **Auto-start service when OS starts**. In both the above cases the Red square icon should turn to green arrow indicating that the service has started.

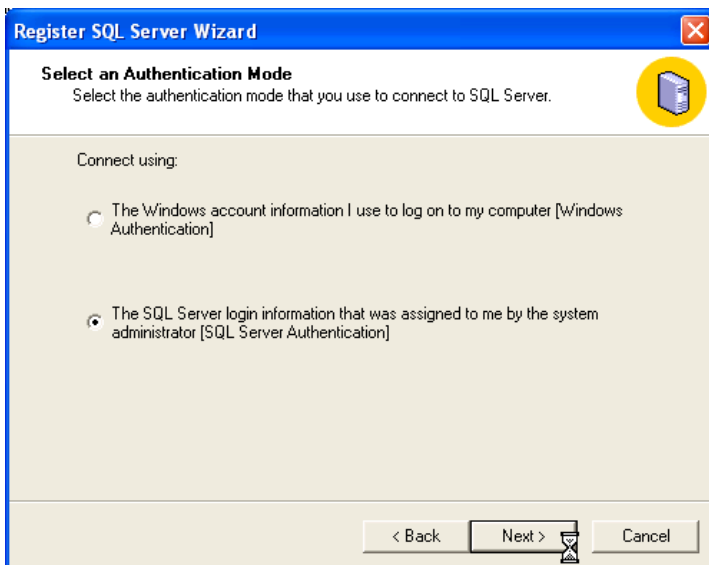
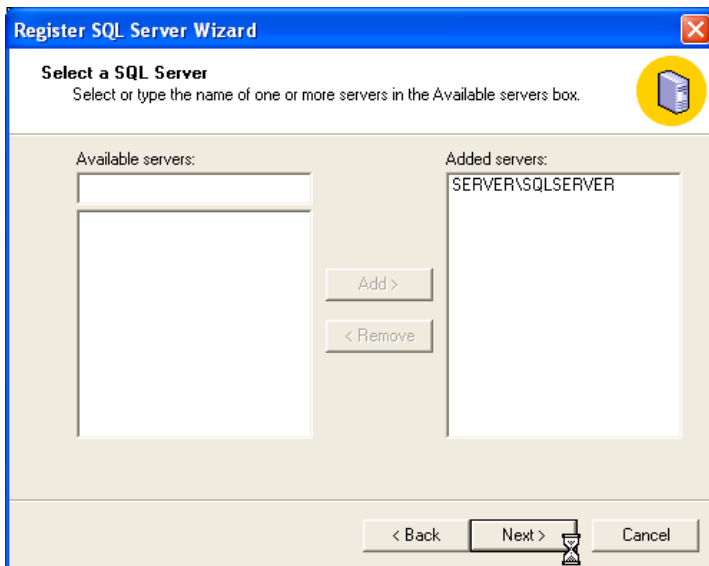
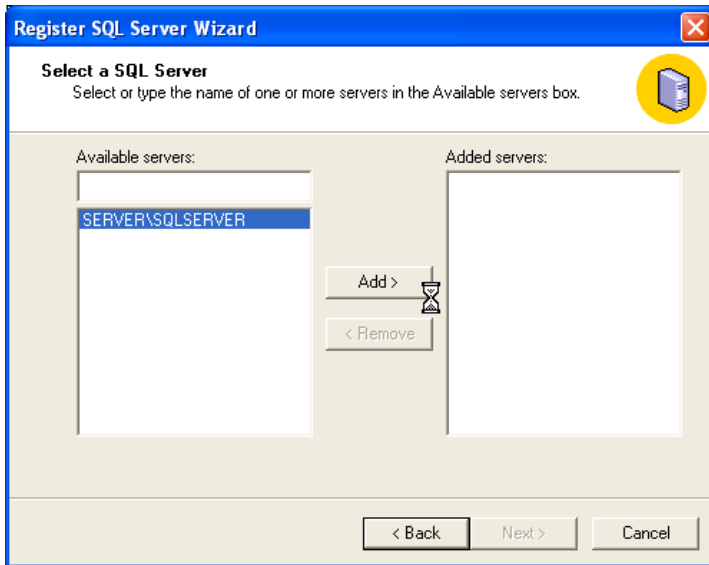


SQL Server Registration

To access the SQL server from Enterprise Manager, it should be first registered with the enterprise manager.

Click on Start -> Microsoft SQL Server -> Enterprise Manager





Register SQL Server Wizard

Select Connection Option

When you connect using SQL Server account information you can store your login name and password or provide it each time you connect.

☒ Login automatically using my SQL Server account information.

Login name:

Password:

☐ Prompt for the SQL Server account information when connecting.

< Back Next > Cancel

Register SQL Server Wizard

Select SQL Server Group

Specify whether you want to add the SQL Server(s) you are registering to the default SQL Server group, another existing group, or a new SQL Server group.

☒ Add the SQL Server(s) to an existing SQL Server group

Group name:

☐ Create a new top-level SQL Server group

Group name:

< Back Next > Cancel

Register SQL Server Wizard

Completing the Register SQL Server Wizard

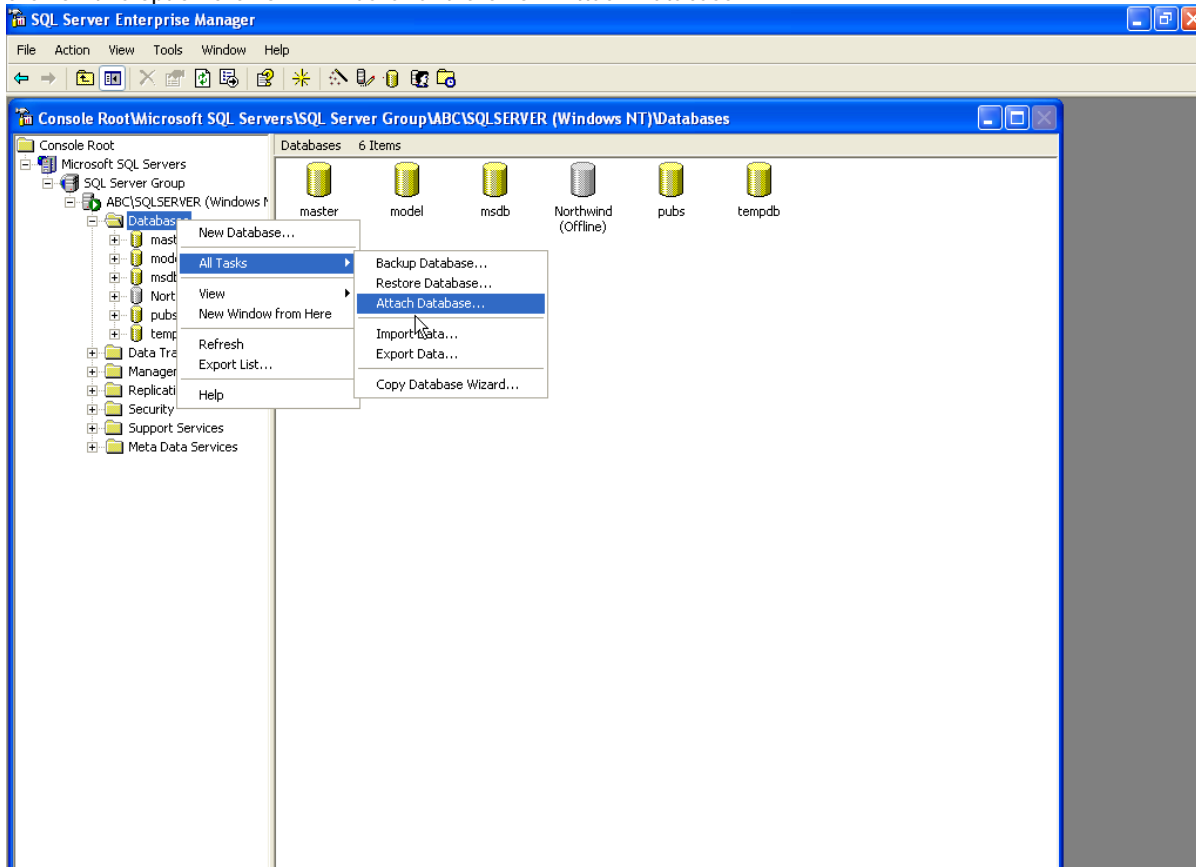
The SQL Server(s) you are registering is shown below. It may take several minutes for the wizard to connect and verify that the server exists and the connection information is valid.

SERVER\SQLSERVER

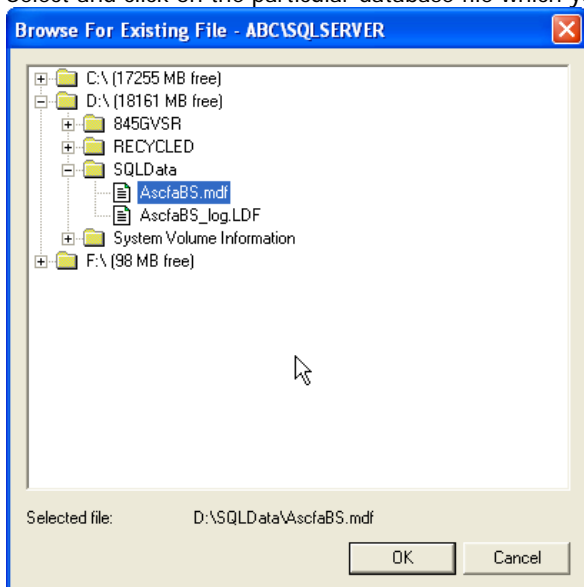
< Back Finish Cancel

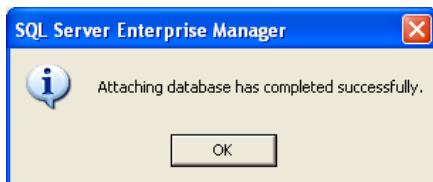
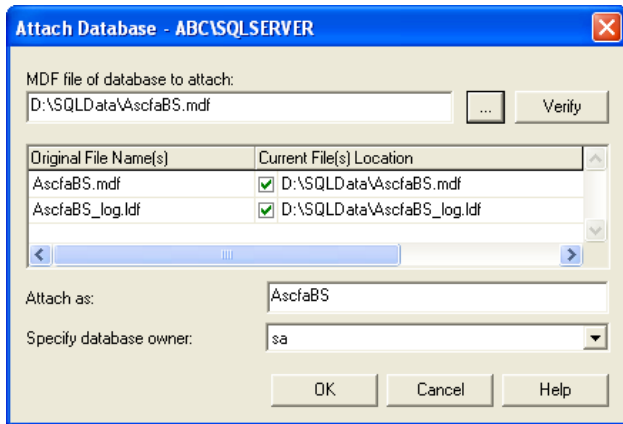
Once the SQL Server Service Manager starts, you need to ensure that the Enterprise Manager is able to connect to the SQL Server and attach your database to the SQL Server. Click on Start Program MS SQL Server Enterprise Manager to open the Enterprise Manager Window.

Expand the "Console Root" on the left hand side by clicking on "+" sign for every item till you have an option "Databases". Right click on this option click on "All Tasks" and click on "Attach Database".



Select and click on the particular database file which you want to attach click on OK.





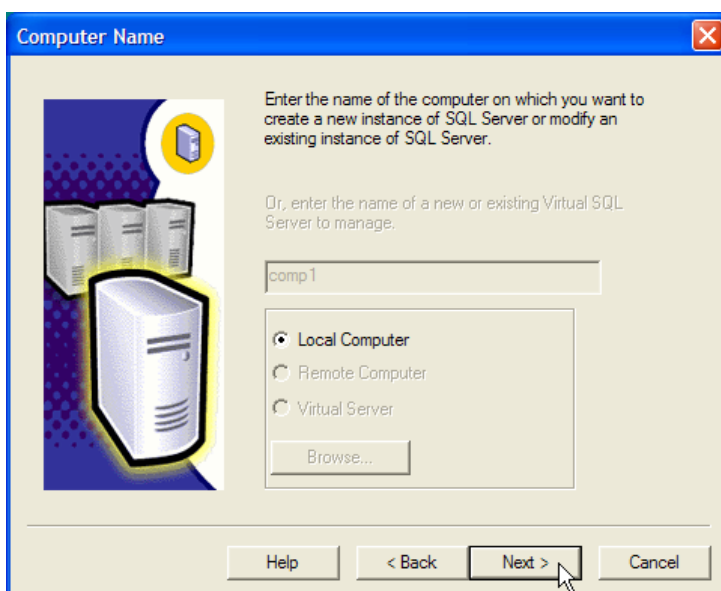
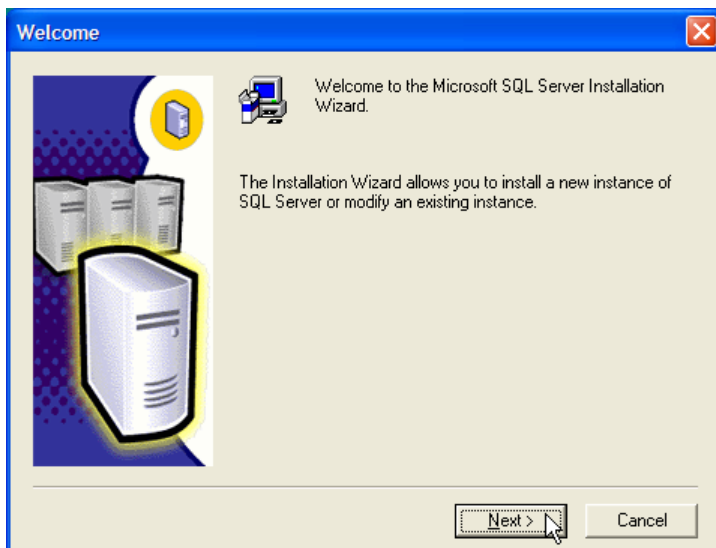
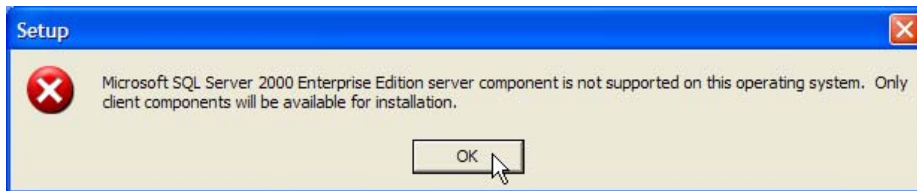
Having attached the database, you are now ready to run / install your application software.

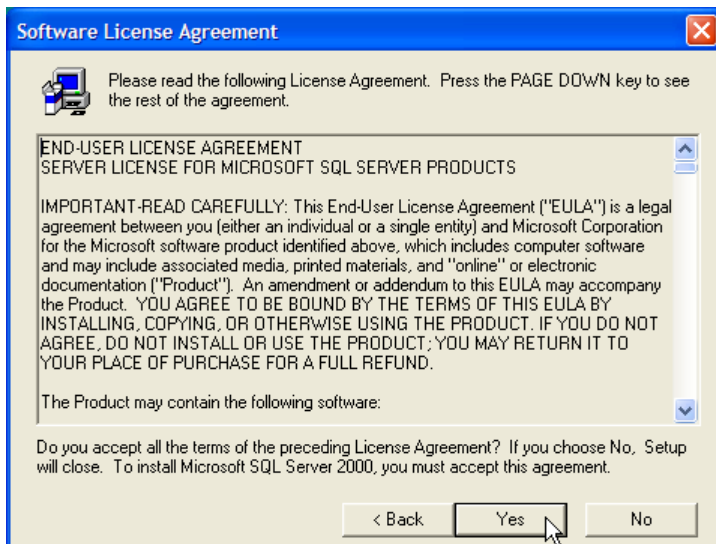
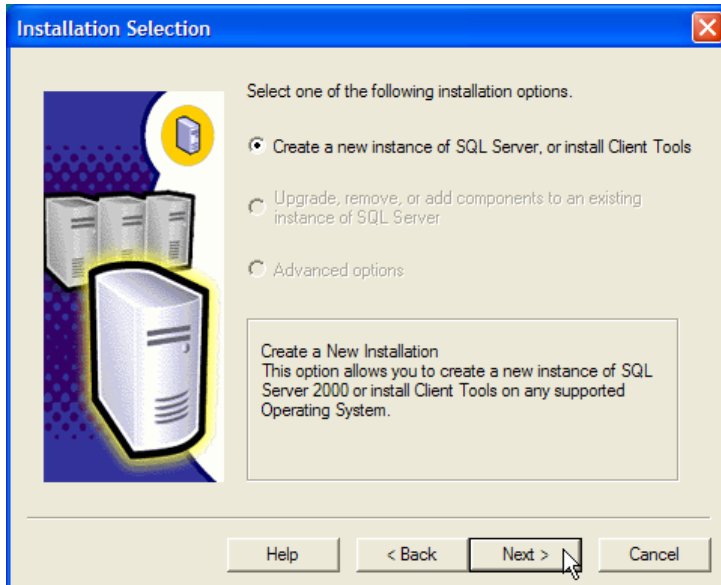
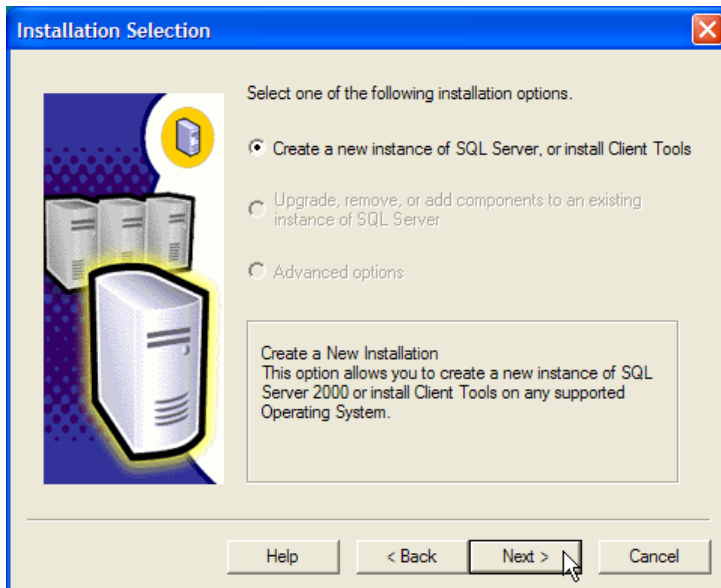
For client systems (terminals) to access the SQL Server, you only need to install the SQL connectivity

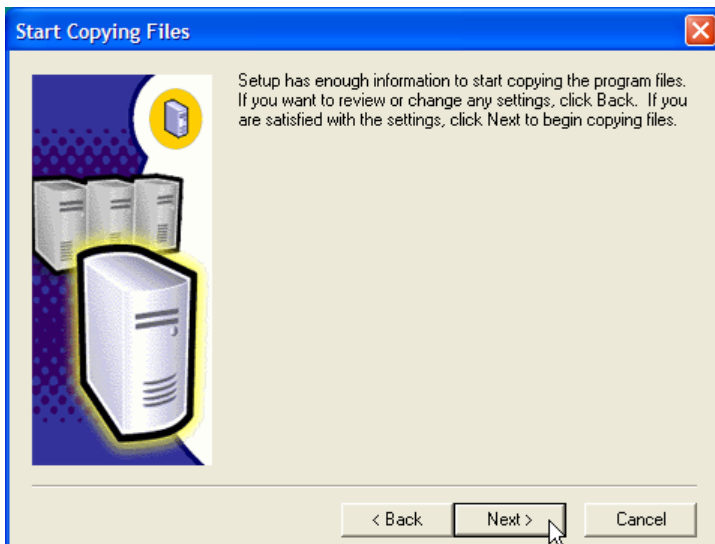
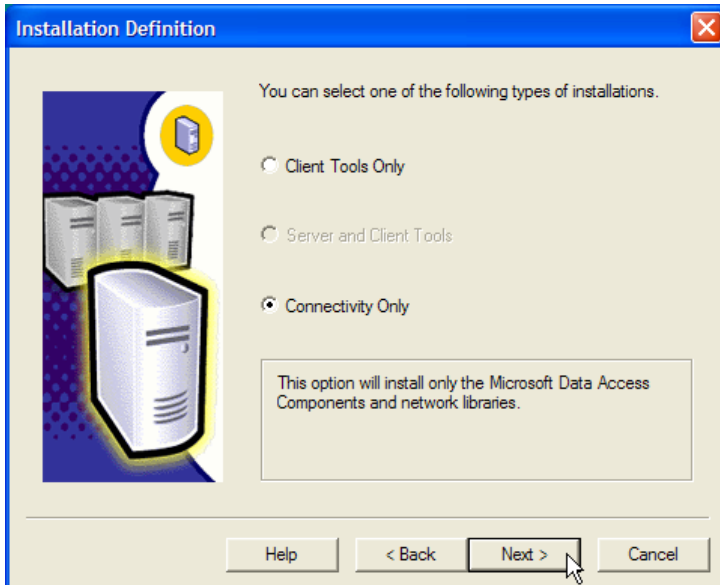
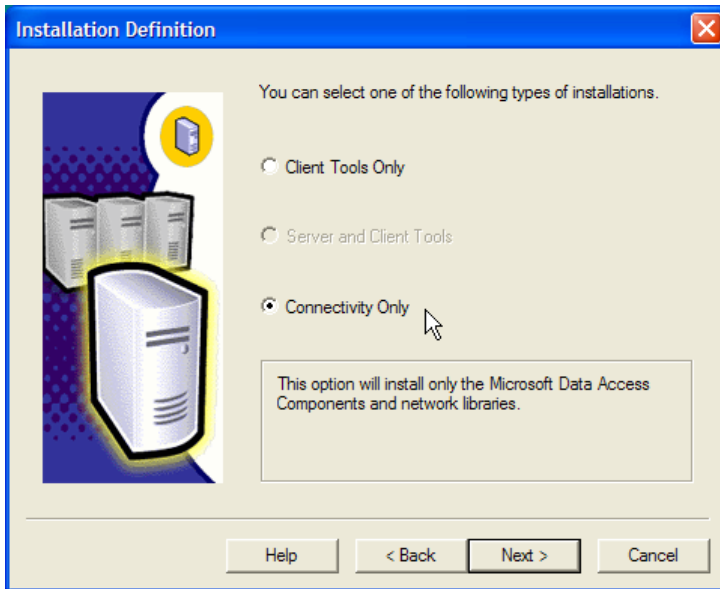
SQL Server – Client Connectivity

On the work stations where from you need to connect to the SQL server to execute your applications, SQL Client Connectivity is to be established. To do this, execute the Setup.exe from the SQL Enterprise folder

Depending on your O/S you may get the following message.









Setup is installing Microsoft Data Access Components (MDAC) ...

Setup Complete

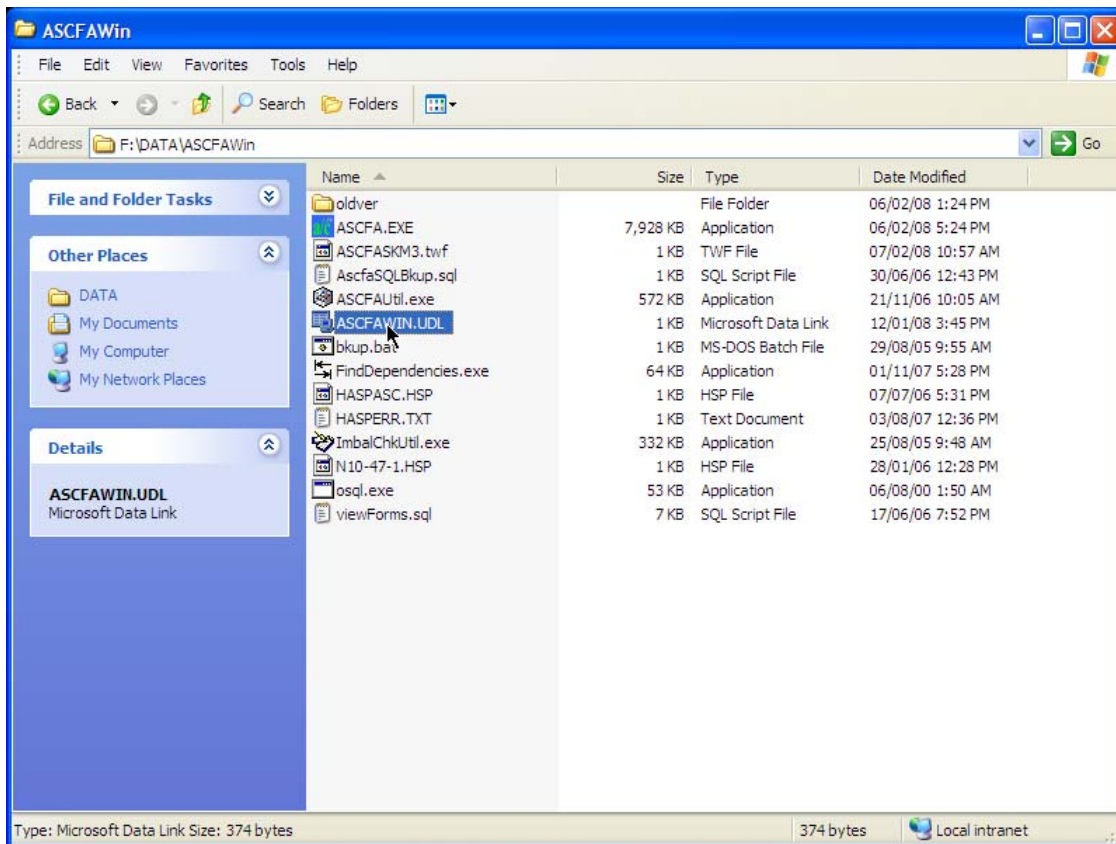


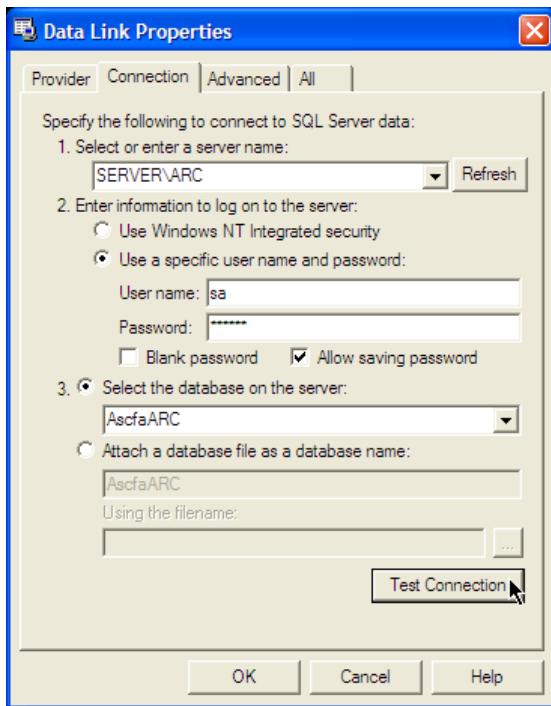
Setup has finished installing an instance of Microsoft SQL Server 2000 on your computer.

Click Finish to complete Setup.

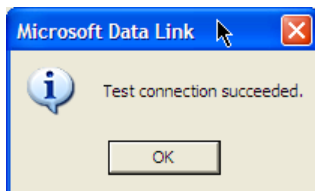
Finish

To check the connectivity now double click on the Microsoft Data Link file (eg ASCFAWin.UDL) in your application folder





Click on the “Test Connection” button and you should get the following message.



Now your terminal is connected to the SQL Server.