

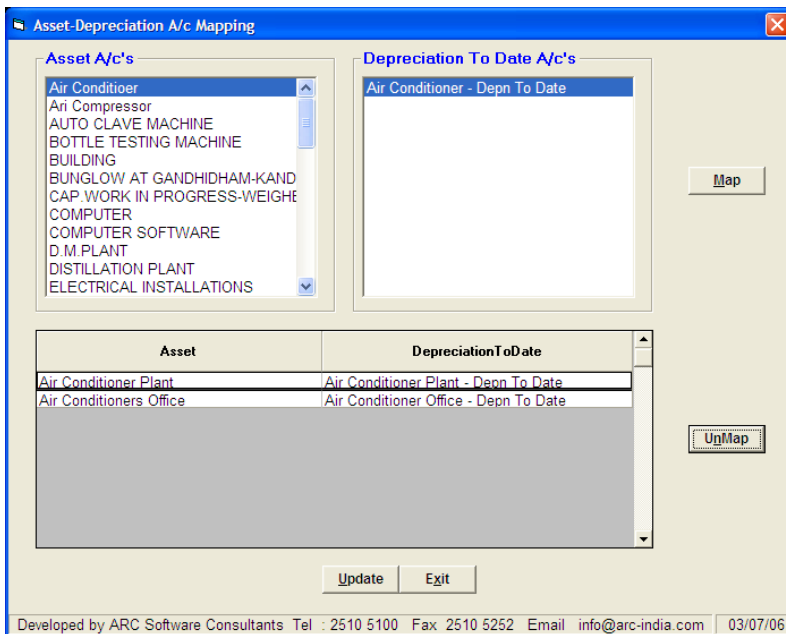
Depreciation Report

This utility / report provides you a facility for calculation of depreciation on your fixed assets and if required, a facility to add these entries in your books of accounts as Journal Entries.

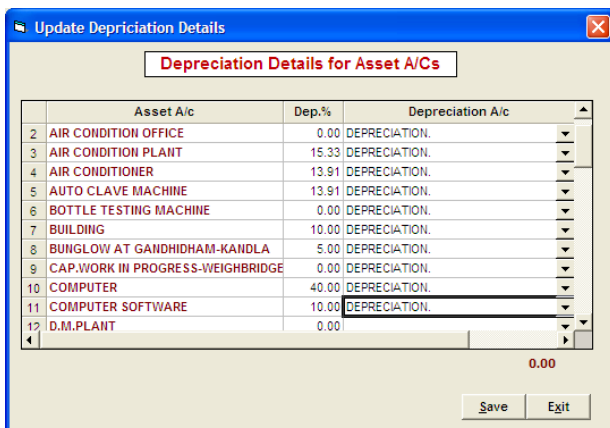
To use this facility, it is necessary that you should have added the depreciation account under a group which is opened under Balance Sheet group "Depreciation"

Select "Reports" -> "Other Reports" => "Depreciation Report" option. You are presented with the following form.

- A. Select the appropriate option for basis of calculating the depreciation. If you have entered the opening balances as per the company's act then select the Company Law option. If your company is not a corporate entity then select the Income Tax Act option.
- B. If you have maintained separate groups for Gross Block and Depreciation-to-date account then check this option.
- C. Check this option if you wish to round off the calculated depreciation amount to the nearest rupee.
- D. If you would like to add the depreciation journal entry into your books, check this option and select the appropriate journal register.
- E. If required you can select only specific asset accounts to be included for the depreciation calculation report.
- F. If you are maintaining separate account groups for gross block and depreciation-to-date, you need to map the depreciation accounts as show below



- G. Clicking on the **Preview** button calculates and displays the depreciation chart as per the option you have selected.
- H. If you have selected the option to add depreciation entries, clicking on **Add JV** button will open up another form with the calculated depreciation, the amount already provided and the balance to be provided. Please
- I. The depreciation percentages are read from the Accounts Master. If for any reason you have not entered the percentage in the Account Master then you can enter the percentage in the grid shown below



and then click on the **Save** button to update this percentage in your Account Master.

Add depreciation JVs – if you wish, you can add the depreciation JVs automatically as displayed in the following form. The module works out the total depreciation up to the date you have selected, also calculates the total depreciation already provided and the balance to be provided. The total depreciation already provided is calculated from the depreciation JVs added earlier.

Add Dep..JV ARC InfoSolutions (0809)

	Fixed Asset A/c (Cr)	Dep.up to 30/06/08	Provided up to 30/06/08	To be provided	Sel	Depriciation A/c (Dr)	Narration
1	Air Conditioner - Onida	879.00	0.00	879.00	<input checked="" type="checkbox"/>	Depreciation For The Year	depreciation on Air Conditioner - Onida @
2	Air Conditioners	187.00	0.00	187.00	<input checked="" type="checkbox"/>	Depreciation For The Year	depreciation on Air Conditioners @15 % p.a
3	Furniture & Fixtures	127.00	0.00	127.00	<input checked="" type="checkbox"/>	Depreciation For The Year	depreciation on Furniture & Fixtures @10
4	Mobile Phone	536.00	0.00	536.00	<input checked="" type="checkbox"/>	Depreciation For The Year	depreciation on Mobile Phone @15 % p.a
5	Vehicles - Uno	2,604.00	0.00	2,604.00	<input checked="" type="checkbox"/>	Depreciation For The Year	depreciation on Vehicles - Uno @25 % p.a

JV Details

Register Date Doc.No

Do you want all Depreciation entries in a single JV

Report generated as per Income Tax Act – No separate account group for Depreciation-To-Date

Depreciation Calculation as on 31/03/07 as per Income Tax Act									
Particulars	Depr. %	W.D.V. as on 01/04/06	Addition during the year		Sales	Depreciation for the year			W.D.V. as on 31/03/07
			> 180 days	< 180 days		> 180 days	< 180 days	Total	
Air Conditioner	13.91	257,034.00				35,753.00		35,753.00	221,281.00
Air Conditioner Plant	15.33								0.00
Air Conditioners Office	0.00								0.00
AUTO CLAVE MACHINE	13.91								0.00
BOTTLE TESTING MACHINE	0.00								0.00
BUILDING	10.00								0.00
BUNGLOW AT GANDHIDHAM-KANDLA	5.00	593,597.00				29,179.00		29,179.00	554,408.00
CARP WORK IN PROGRESS-WEIGHBRIDGE	0.00								0.00
COMPUTER	40.00	1,598,533.00				639,413.00		639,413.00	959,120.00
COMPUTER SOFTWARE	10.00	605,109.00				60,511.00		60,511.00	544,598.00
EXTRUDER MACHINES	13.91								0.00
FACTORY BUILDING	10.00	524,316.00				52,432.00		52,432.00	471,884.00
FIRE EXTINGUISHER	13.91	63,614.00				8,849.00		8,849.00	54,765.00
FIRE FIGHTING MACHINERY	13.91	167,419.00				23,288.00		23,288.00	144,131.00
FIRE PROTECTION SYSTEMS	13.91	5,622,126.00				782,038.00		782,038.00	4,840,088.00
FLAT PURNIMA	5.00	10,589,346.00				529,467.00		529,467.00	10,059,879.00
FLOOR POLISHING MACHINE	13.91								0.00
FOOT MOUNTED MOTOR	13.91								0.00
FURNITURE & FITTING IN PURNIMA FLAT	18.10	228,205.00				41,305.00		41,305.00	186,900.00
FURNITURE & FIXTURE	18.10	459,178.00				83,111.00		83,111.00	376,067.00
LABOUR & STAFF QUARTERS	5.00	163,163.00				8,158.00		8,158.00	155,005.00
MACHINERY FOR PROXY COMPLND	13.91								0.00

Report generated as per Companies Act – Separate account group for Depreciation-To-Date

Depreciation Calculation as on 31/03/07 as per Company Law

Particulars	Depr. %	Gross Block				Depreciation		Net Block As On	
		as on 01/04/06	Additions during the Year	Sales	as on 31/03/07	as on 01/04/06 For the Year	as on 31/03/07	as on 01/04/06	as on 31/03/07
Air Conditioner	13.91	237,034.00			237,034.00	35,753.00	35,753.00	237,034.00	221,281.00
Air Conditioner Plant	15.33								
Air Conditioners Office	0.00								
AUTO CLAVE MACHINE	13.91								
BOTTLE TESTING MACHINE	0.00								
BUILDING	10.00								
BUNGLOW AT GANDHIDHAMKAND	5.00	583,587.00			583,587.00	29,179.00	29,179.00	583,587.00	554,408.00
CAP.WORK IN PROGRESS-WEIGH	0.00	1,599,533.00			1,599,533.00	639,413.00	639,413.00	1,599,533.00	959,120.00
COMPUTER	40.00	605,109.00			605,109.00	60,511.00	60,511.00	605,109.00	544,598.00
COMPUTER SOFTWARE	10.00								
EXTRUDER MACHINES	13.91								
FACTORY BUILDING	10.00	524,316.00			524,316.00	52,432.00	52,432.00	524,316.00	471,884.00
FIRE EXTINGUISHER	13.91	63,614.00			63,614.00	8,849.00	8,849.00	63,614.00	54,765.00
FIRE FIGHTING MACHINERY	13.91	167,419.00			167,419.00	23,288.00	23,288.00	167,419.00	144,131.00
FIRE PROTECTION SYSTEMS	13.91	5,622,126.00			5,622,126.00	782,038.00	782,038.00	5,622,126.00	4,840,088.00
FLAT PURNIMA	5.00	10,589,346.00			10,589,346.00	529,467.00	529,467.00	10,589,346.00	10,059,879.00
FLOOR POLISHING MACHINE	13.91								
FOOT MOUNTED MOTOR	13.91								
FURNITURE & FITTING IN PURNIMA	18.10	228,205.00			228,205.00	41,305.00	41,305.00	228,205.00	186,900.00
FURNITURE & FIXTURE	18.10	459,178.00			459,178.00	83,111.00	83,111.00	459,178.00	376,067.00
LABOUR & STAFF QUARTERS	5.00	163,163.00			163,163.00	8,158.00	8,158.00	163,163.00	155,005.00
MACHINERY FOR EPOXY COMPUT	13.91								
OFFICE BUILDING	5.00	12,655.00			12,655.00	633.00	633.00	12,655.00	12,022.00
OFFICE EQUIPMENT	13.91	1,150,340.00	3,500.00		1,153,840.00	160,482.00	160,482.00	1,150,340.00	993,358.00
OTHER EQUIPMENT	13.91	37,063.00			37,063.00	5,155.00	5,155.00	37,063.00	31,908.00

Report generated as per Income Tax Act – Separate account group for Depreciation-To-Date

Depreciation Calculation as on 31/03/07 as per Income Tax Act

Particulars	Depr. %	Gross Block				Depreciation		Net Block as on			
		as on 01/04/06	Additions during the year > 180 days	< 180 days	Sales	as on 31/03/07	as on 01/04/06	> 180 days < 180 days	as on 31/03/07	as on 01/04/06	31/03/07
Air Conditioner	13.91	237,034.00				237,034.00	35,753.00		35,753.00	237,034.00	221,281.00
Air Conditioner Plant	15.33										
Air Conditioners Office	0.00										
AUTO CLAVE MACHINE	13.91										
BOTTLE TESTING MACHINE	0.00										
BUILDING	10.00										
BUNGLOW AT GANDHIDHAMKAND	5.00	583,587.00				583,587.00	29,179.00		29,179.00	583,587.00	554,408.00
CAP.WORK IN PROGRESS-WEIGH	0.00	1,599,533.00				1,599,533.00	639,413.00		639,413.00	1,599,533.00	959,120.00
COMPUTER	40.00	605,109.00				605,109.00	60,511.00		60,511.00	605,109.00	544,598.00
COMPUTER SOFTWARE	10.00										
EXTRUDER MACHINES	13.91										
FACTORY BUILDING	10.00	524,316.00				524,316.00	52,432.00		52,432.00	524,316.00	471,884.00
FIRE EXTINGUISHER	13.91	63,614.00				63,614.00	8,849.00		8,849.00	63,614.00	54,765.00
FIRE FIGHTING MACHINERY	13.91	167,419.00				167,419.00	23,288.00		23,288.00	167,419.00	144,131.00
FIRE PROTECTION SYSTEMS	13.91	5,622,126.00				5,622,126.00	782,038.00		782,038.00	5,622,126.00	4,840,088.00
FLAT PURNIMA	5.00	10,589,346.00				10,589,346.00	529,467.00		529,467.00	10,589,346.00	10,059,879.00
FLOOR POLISHING MACHINE	13.91										
FOOT MOUNTED MOTOR	13.91										
FURNITURE & FITTING IN PURNIMA	18.10	228,205.00				228,205.00	41,305.00		41,305.00	228,205.00	186,900.00
FURNITURE & FIXTURE	18.10	459,178.00				459,178.00	83,111.00		83,111.00	459,178.00	376,067.00
LABOUR & STAFF QUARTERS	5.00	163,163.00				163,163.00	8,158.00		8,158.00	163,163.00	155,005.00

Depreciation Calculation as on 31/03/07 as per Company Law						
Particulars	Dep. %	W.D.V. as on 01/04/06	Additions During the year	Sales	Depreciation for the Year	W.D.V. as on 31/03/07
Air Conditioner	13.91	257,034.00			35,753.00	221,281.00
Air Conditioner Plant	15.33					
Air Conditioners Office						
AUTO CLAVE MACHINE	13.91					
BOTTLE TESTING MACHINE						
BUILDING	10.00					
BUNGLOW AT GANDHIDHAM-KANDLA	5.00	583,587.00			29,179.00	554,408.00
CAP.WORK IN PROGRESS-WEIGHBRIDGE						
COMPUTER	40.00	1,598,533.00			639,413.00	959,120.00
COMPUTER SOFTWARE	10.00	605,109.00			60,511.00	544,598.00
EXTRUDER MACHINES	13.91					
FACTORY BUILDING	10.00	524,316.00			52,432.00	471,884.00
FIRE EXTINGUISHER	13.91	63,614.00			8,849.00	54,765.00
FIRE FIGHTING MACHINERY	13.91	167,419.00			23,288.00	144,131.00
FIRE PROTECTION SYSTEMS	13.91	5,622,126.00			782,038.00	4,840,088.00
FLAT PURNIMA	5.00	10,589,348.00			529,467.00	10,059,879.00
FLOOR POLISHING MACHINE	13.91					
FOOT MOUNTED MOTOR	13.91					
FURNITURE & FITTING IN PURNIMA FLAT	18.10	228,205.00			41,305.00	186,900.00