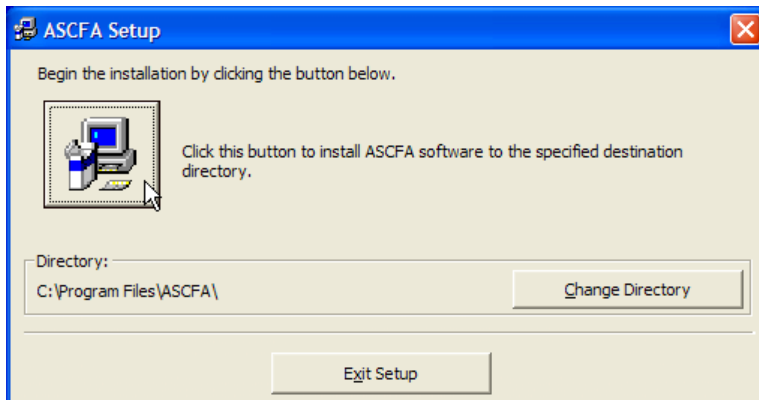
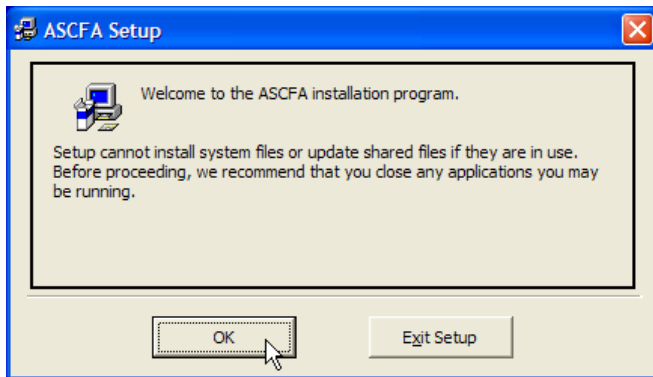
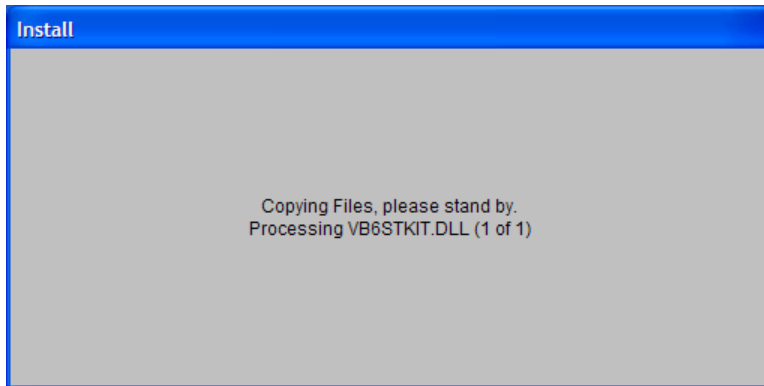
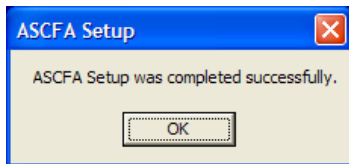
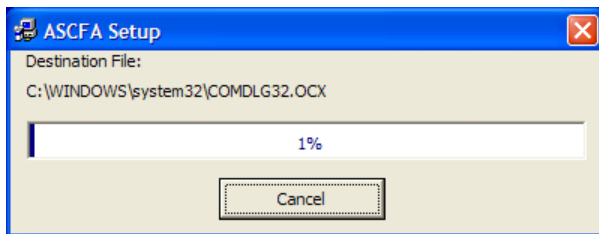
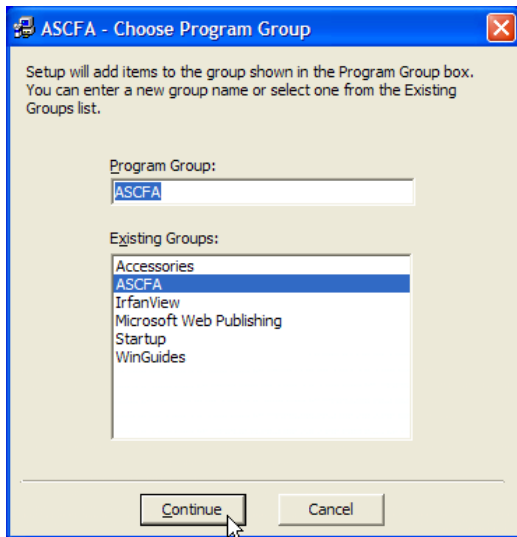


ASCFA Installation

Locate the SETUP.EXE from the ASCFA installation folder and double click on it.

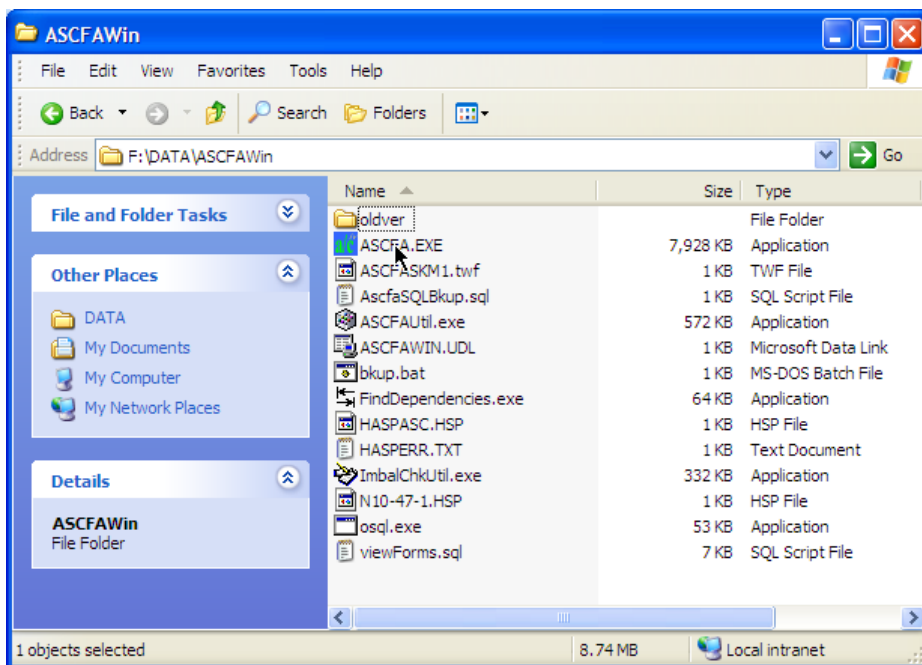
During the installation process a lot of files are copied to your hard drive. Some of the files may already be existing on your hard drive. At any point if you are asked whether you want to skip copying a file because a later version of the file (than the one setup is copying) exists on your hard drive, please do so.

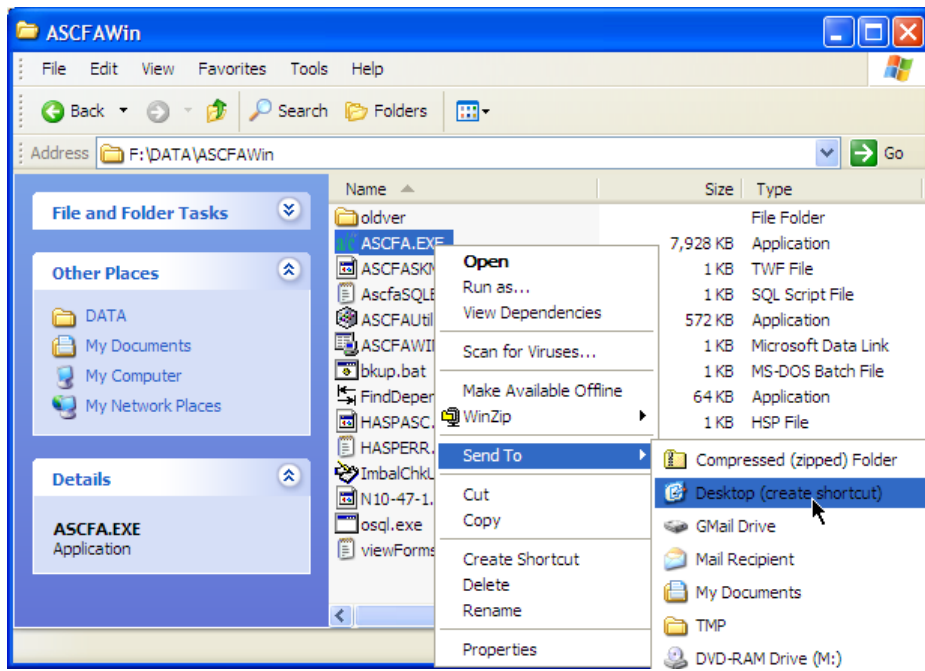




The above process will copy the necessary dll files that the package require along with the ASCFA.EXE which is copied to the C:\Program Files\ASCFA folder.

This file is actually not to be executed. The ASCFA folder on your server will have the actual ASCFA.EXE file and it should be executed from this folder only. If required create a shortcut to this file on your desktop.





A new short cut will be placed on your desktop.